

## CIMulator<sup>2014</sup> 3D

### CIM3D 2014 Release

ANCA's CIMulator3D 2014 simulation package provides significant benefits to customers and large advances in the visual clarity of the simulations.

The updated icons, toolbars, new mouse wheel support and enhanced modern look not only make CIM3D more enjoyable and easier to use, but also provide upgraded functionality.

CIM3D 2014 delivers advanced tool simulation quality and an upgraded user interface for high performance and increased efficiency.

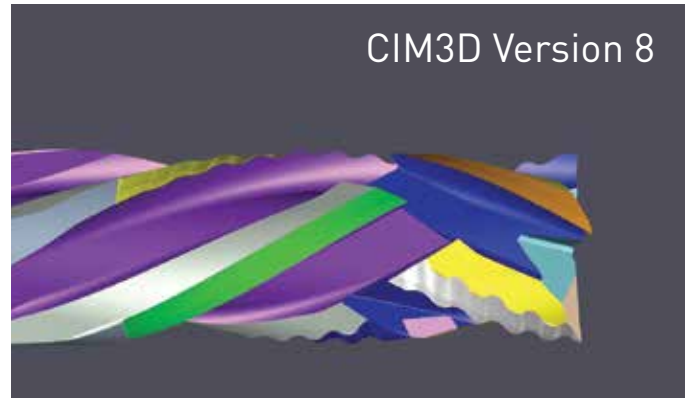
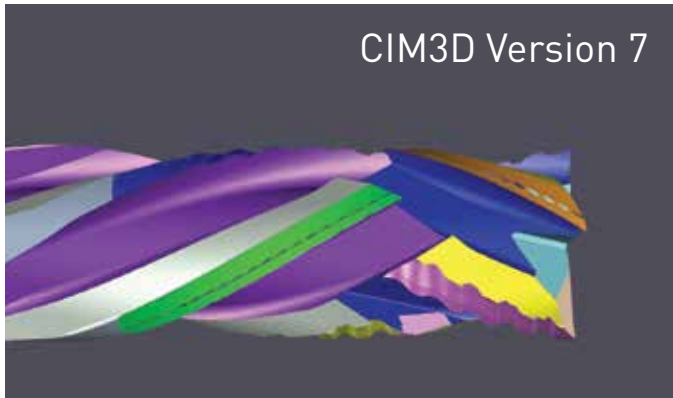
#### Modernised User Interface

- Updated style to improve look and feel
- Updated icons, toolbars, layouts and controls
- Mouse wheel support for dials



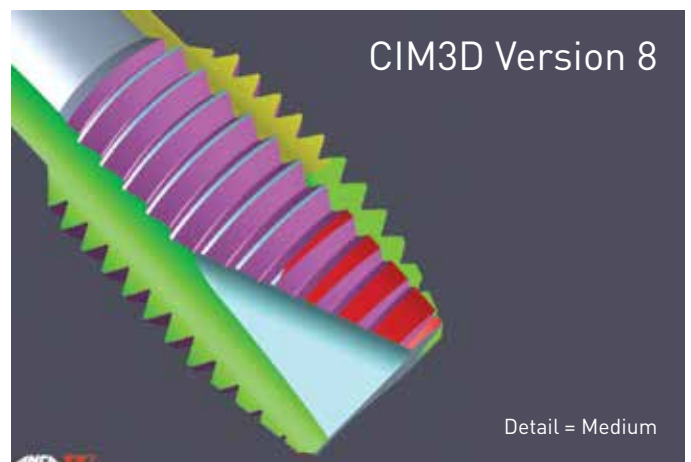
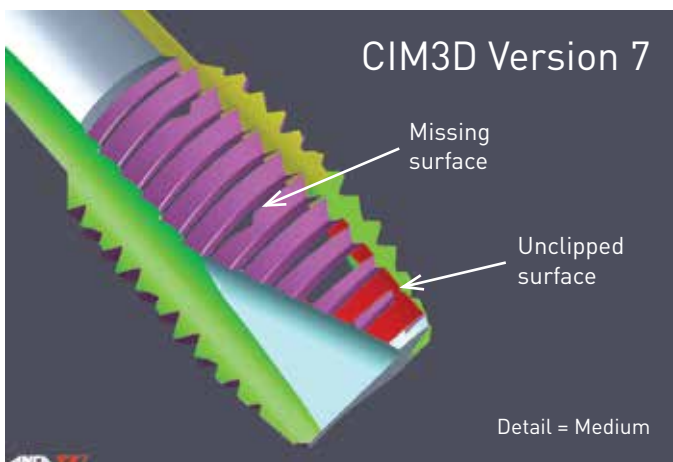
## Improved Tool Simulation Quality

- Filled up gaps between surfaces
- Edges are better represented to provide sharper tool features



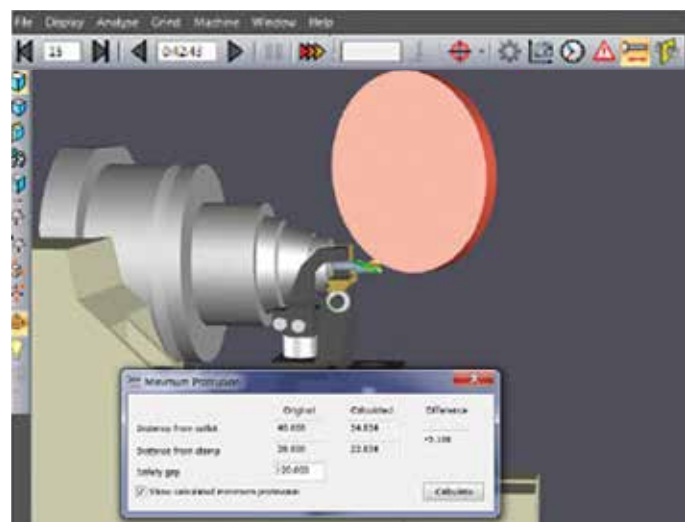
## Reduced Artefacts

- Small features are now shown in greater detail
- Surface accuracy has been improved



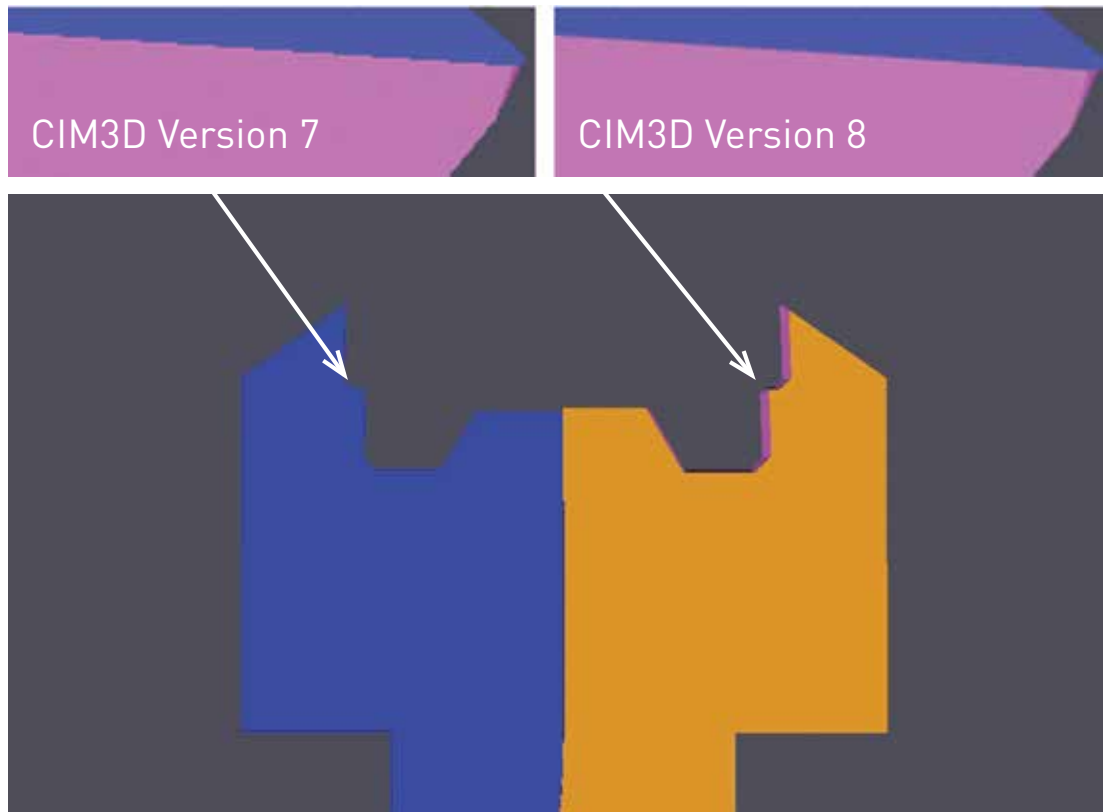
## Minimum Protrusion Functionality & Dialogue

- CIM3D can now calculate the minimum protrusion length of simulated tools
- The collet and top clamp are included as part of the calculation
- This identifies possible collisions before they occur by modelling work-holding products used on the machine



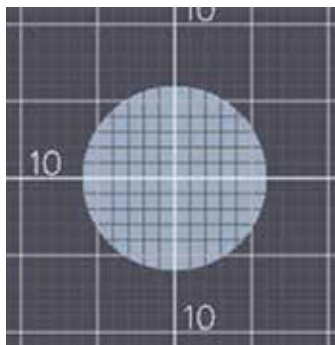
## Anti-Aliasing

- Anti-aliasing support has been added and turned on by default to create smoother edges



## Graph Paper Resolution

- Changes to the grid resolution are now reflected in the graph paper resolution



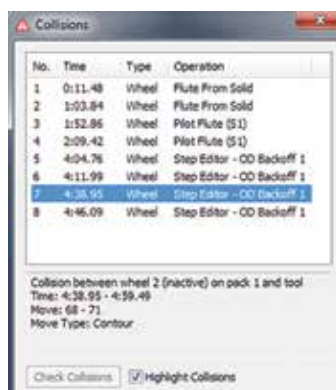
## Flexible Numeric Controls

- New numeric controls in measurement view allow individual number scrolling with either buttons provided or a mouse wheel



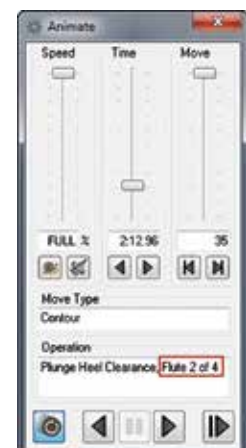
## Improvements To Collision Dialogue

- The Operation and Time field has been added to the collision results to enable easy identification of the operations



## Flute Numbers Displayed in the Animate Dialogue

- Flute numbers are now displayed in the animate dialogue in the operation field



## New Flute Colour Mapping Mode

- A flute colour mapping mode has been added which highlights each flute in a different colour (requires RN32.1 & above)

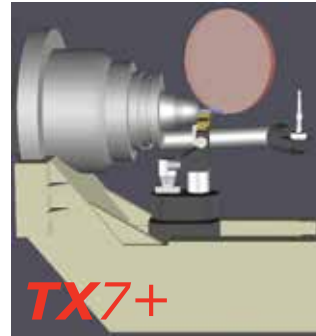


## Other Enhancements Include:

- 'Show wheel here' has been added to the tool menu option which appears in the pop-up menu when double clicking the tool
- The protractor button on the toolbar is now a dropdown from which other grid modes can be selected
- .TPD files have been replaced with .CIM3D files for faster performance while saving and loading tools
- It is now much easier and faster to place the mouse cursor exactly at the required plane or surface
- The user interface will now scale correctly when Windows DPI settings are modified
- The departure time in animate and collision has been replaced with the actual time

## TX7 And MX7 Wheel Probe Models

- The wheel probe models for MX7 / MX5 / TX7 in up and down position have been added to CIM3D for improved collision detection



*Existing customers may access further product information and software updates from [www.anca-club.com](http://www.anca-club.com)  
Please email ANCA Club account requests to [ancaclub@anca.com](mailto:ancaclub@anca.com)*

**[www.anca.com](http://www.anca.com)**

email: [info@anca.com](mailto:info@anca.com)

**Head office: Australia**

ANCA offices in the UK, Germany, Japan, China, Thailand, Brazil, Mexico, India and the USA.  
Supported by a global network of agents.