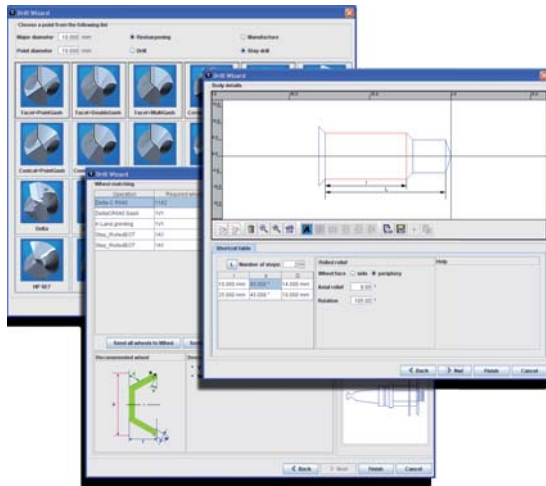


RN30 Toolroom Release

ANCA is pleased to advise their valued customers of the Release of Version 30 software for their range of CNC Tool and Cutter Grinders. There are over 100 new features and enhancements included in this release.

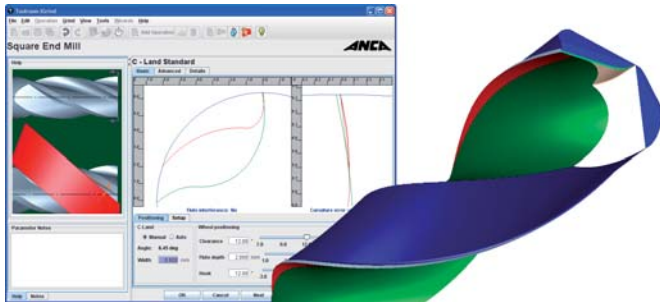
Drill and Step Tool Wizard

RN30 includes a new comprehensive Drill Wizard that enables a step drill to be set-up for re-grinding or manufacturing using a four step process. The same interface can be used to simplify the creation of step geometry within the Step Tool Editor.



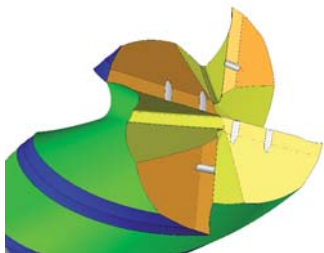
C-Land Operation

A dedicated cycle has been added to simplify the process of producing the C-Land feature on the flute. The operation features a graphical display for ease of use.



Chip-Breaker

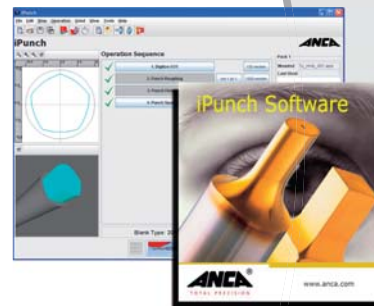
The new Chip-Breaker cycle enables the production of chip breakers on end face geometry and is available for square end, corner radius, ballnose and step tools.



ANCA[®]
TOTAL PRECISION

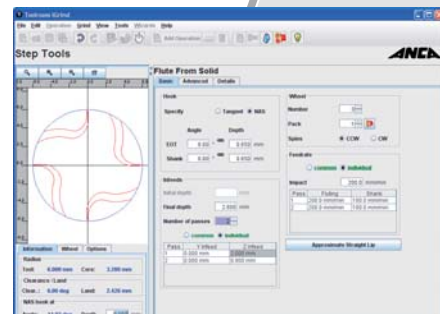
iPunch

iPunch is a new application specifically designed to produce standard and custom punches, as well as perform cylindrical grinding. Punch geometry can be specified using one of the 38 geometry templates, drawn using the inbuilt 2D editor, or imported via the DXF import facility. iPunch programs can be easily imported and used within iGrind and the Keyhole Punch software.



Flute Display

All fluting cycles now feature a 2D flute display preview. The preview is updated in real-time as parameters are entered. Important geometric information such as core radius, land width, and hook angle at a specified depth are displayed.



AutoQ - Automatic Wheel Qualification

ANCA has developed an optional automatic wheel qualification process using existing machine hardware to deliver high accuracy results at a low-cost.



Precision

Versatility

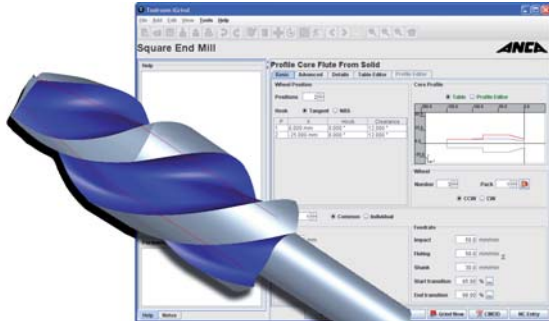
Productivity

Confidence

RN30 Toolroom Release

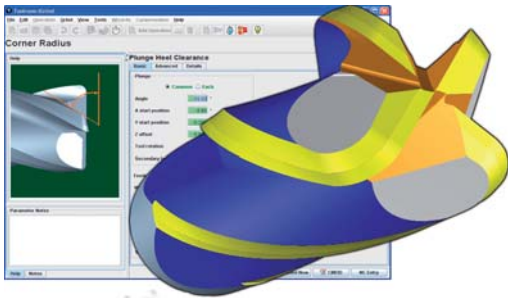
Profile Core Fluting

Standard and formed wheel fluting cycles have been added to support fluting profiles with several tapered core sections. Hook angle can be specified at several points along the profile.



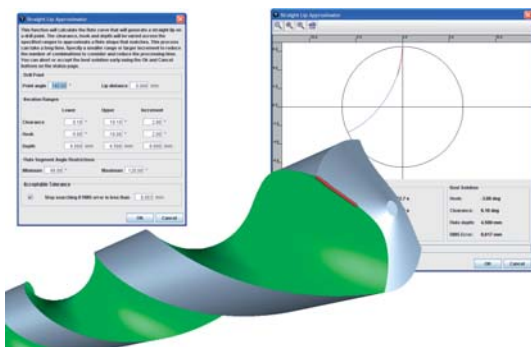
Plunge Heel Clearance

A cycle has been added to the corner radius tool type to perform a Plunge Heel Clearance.



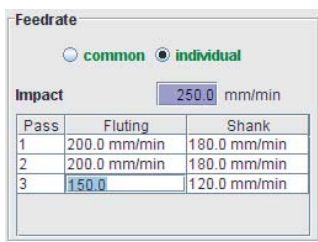
Straight Lip Approximator

A facility has been added to the standard fluting cycle to automatically calculate the parameters required (over a specified range of values) to achieve a straight lip section on the point of a drill.



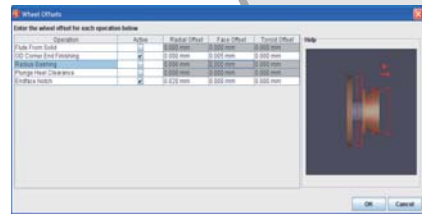
Feedrate Per Pass

It is now possible to optionally specify the feedrate per pass for all fluting and gashing cycles within iGrind.



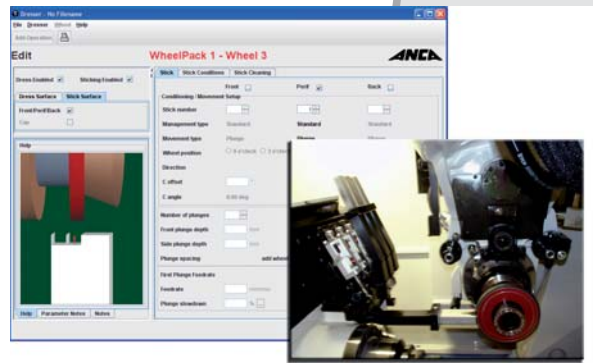
Wheel Offset Table

It is now possible to specify wheel offsets per operation. The option is easily accessible from the iGrind main screen. Active operations are listed in a table format with options to apply radial, face and toroid radius offsets.



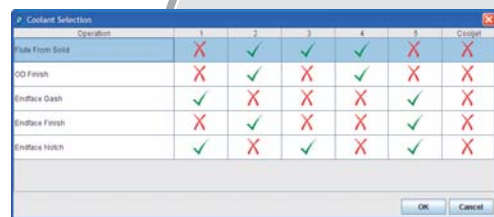
Automated White-Sticking

Automatic white-sticking has been added to the dresser software. This feature enables in-process sticking of super-abrasive grinding wheels. An automatic white-stick fixture is currently available for TX7+ machines.



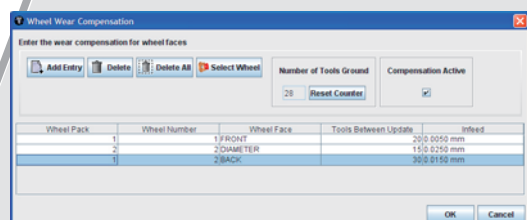
Coolant Selection Table

Coolant selection can now be easily accessed via a command button on the main page of iGrind. The table displays all available operations and allows quick setup of coolant.



Wheel Wear Compensation

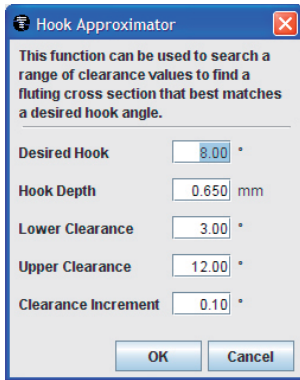
A wheel wear compensation facility has been added under the TOOLS menu. This function allows for automatic wear compensation through empirical understanding of the wear characteristics of the wheel after a certain number of tools ground.



RN30 Toolroom Release

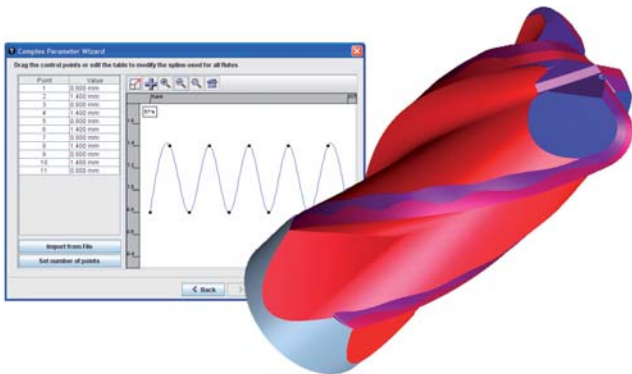
Hook Approximation for Formed Fluting

A facility has been added to the Formed Fluting cycle to iteratively calculate the required clearance angle to produce a specified hook angle.



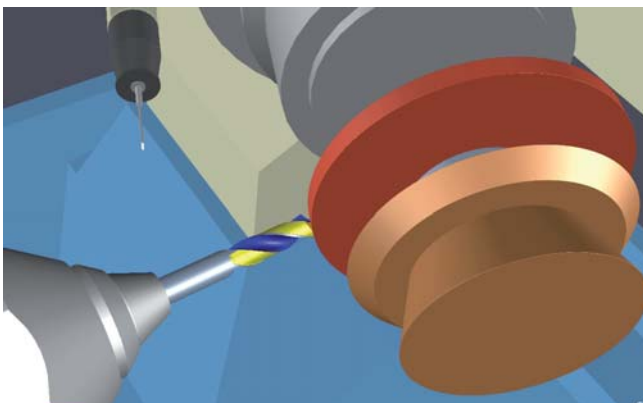
"Complex" Parameter Specification for Primary, Secondary Relief and Land for Corner Radius and Ballnose tools.

The OD and Ball parameters for Primary, secondary relief and Land for corner radius and ballnose tools have been made "complex". This means that these values can be specified using a range of functions rather than a single parameter.



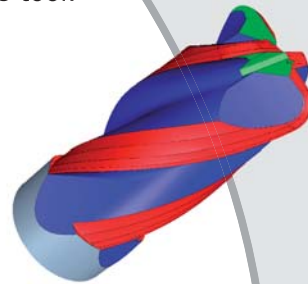
Conical Drill Point Grinding Options

An option has been added to the Conical Drill Point cycle to be able to grind the point using either the face or periphery of the grinding wheel. This allows the point to be ground with the face of a cup wheel or periphery of a 1A1 (flat) wheel.



Multiple Relief on Corner Radius

A new option has been added to optionally grind multiple reliefs on the OD, corner and end face on a Corner Radius tool.



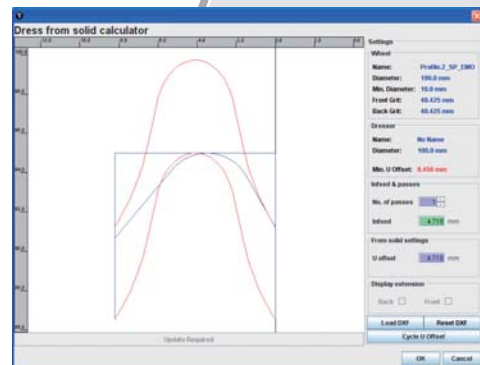
Bottom Radius Walk for Ball and Radius Gash

The radius walk option has been added to the Ball and Radius Gash cycles. This option allows the walk to follow a circular path at the bottom of the gash.



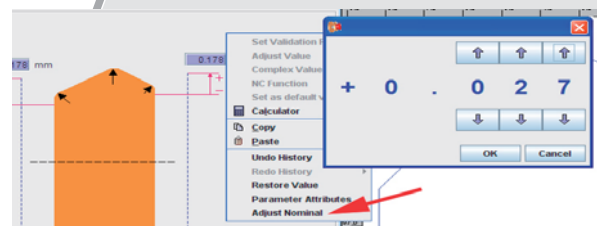
Dress from Solid Calculator Enhancement

The "dress from solid" calculator in the dressing cycle is now able to take into consideration the existing wheel geometry when a new profile is being dressed into the wheel. This functionality significantly reduces dressing time when using conventional abrasive wheels.



Adjust Nominal Feature

A feature has been added to the right-click menu within the wheel editor to allow small adjustments to be made without requiring manual calculation.

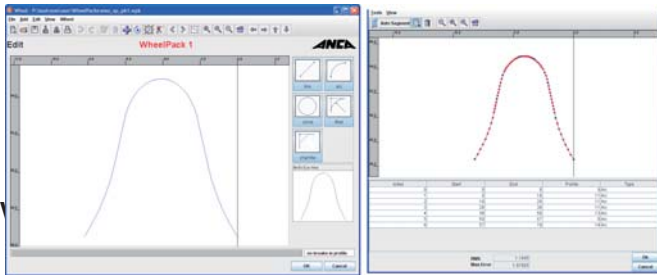


RN30 Toolroom Release

2D Profile Editor Enhancements

RN30 includes various enhancements to the 2D profile editor found across many Toolroom applications such as iGrind, WHED (Wheel Editor) and the Dresser software. Some of these enhancements includes;

- Function to allow chamfer of specified length to be inserted between 2 lines.
- Function to add a tangential line to an existing element.
- The addition of a circle element.
- A line-arc approximation feature has been added to allow complex profiles to be approximated by a series of larger line and arc segments.



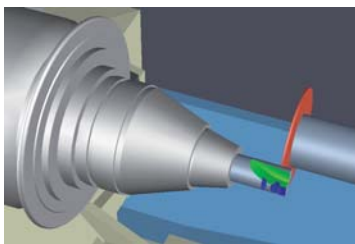
MA Burr Shape

A new burr shape (MA) as been added to the standard burr software.



Slice Roughing at 3 O'clock

An option has been added in the Slice Roughing operation to allow roughing to take place at 3 or 12 O'clock tool position.



ANCA[®]

TOTAL PRECISION

www.anca.com

ANCA Pty. Ltd.
25 Gatwick Road
Bayswater North
Victoria 3153
AUSTRALIA
Tel +61 3 9751 8200
ozinfo@anca.com.au

ANCA GmbH
Alois-Senefelder-Str. 4
68167 Mannheim
GERMANY
Tel +49 621 338100
gerinfo@anca.com.au

ANCA Ltd.
2 Eastwood Business
Village
Harry Weston Road
Coventry CV3 2UB
UNITED KINGDOM
Tel +44 2476 44 7000
ukinfo@anca.com.au

ANCA Italia
Via Retrone, 39
36077 Altavilla
Vicentina (VI)
ITALY
Tel +39 444 341
642
itinfo@anca.com.au

ANCA Inc.
31129 Century Drive
Wixom
Michigan 48393
USA
Tel +1 248 926 4466
usainfo@anca.com.au

ANCA do Brasil
Rua Francisco Fer-
reira Leão 377
Sorocaba 18040 330
São Paulo
BRASIL
Tel 015 - 3221 5512
brinfo@anca.com.au

ANCA (Thailand) Ltd
Eastern Seaboard
Industrial Estate,
No. 109/20 Moo 4,
Tambon Pluakdaeng,
Amphur Pluakdaeng,
Rayong 21140
THAILAND
Tel +66 3895 9252
thainfo@anca.com.au

ANCA Machine Tool
(Shanghai) Co. Ltd
West Wing, 1/F,
Building 4, 475 Fu Te
No. 1 Road(W)
Waigaoqiao FTZ
Shanghai
CHINA
Tel +86 21 5868 2940
chinfo@anca.com.au

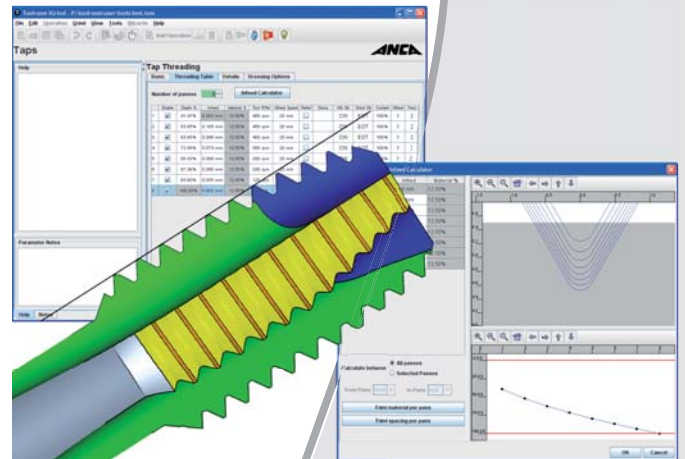
ANCA Japan
3-60-1 Sakuragaoka-cho
Owariasahi-shi
Aichi-ken
JAPAN 488-0859
Tel +81 561 53 8543
japinfo@anca.com.au

Tap Software Enhancements

Various enhancements have been made to the iTap software. This includes a new table format for the threading cycle that allows all grinding parameters to be specified on a per-pass basis. An infeed calculator automatically calculates the infeed per pass to achieve equal material removal for all thread types. The infeeds are displayed graphically.

The threading cycles now also support multiple taper sections. Thread pitch remains consistent across all taper sections and transitions.

Other improvements include an equal material removal infeed calculator for fluting, segment angle calculator for threading, and an improved chamfering cycle that compensates for spiral point gash geometry.



Other RN30 Enhancements

RN30 includes many other enhancements to ANCA's industry leading Toolroom software. Some of these include;

- Improved support for TX7+ P-Axis
- New coolant hole digitizing options
- New scripting functions
- Tooloffset feature for special operations
- New washout options for shear tools
- New mode-regrind options
- NAS hook calculation enhancements
- Adaptive grinding for slice roughing
- Wheel side selection for gashing

Please talk to your ANCA representative for further information on the RN30 Toolroom release.